

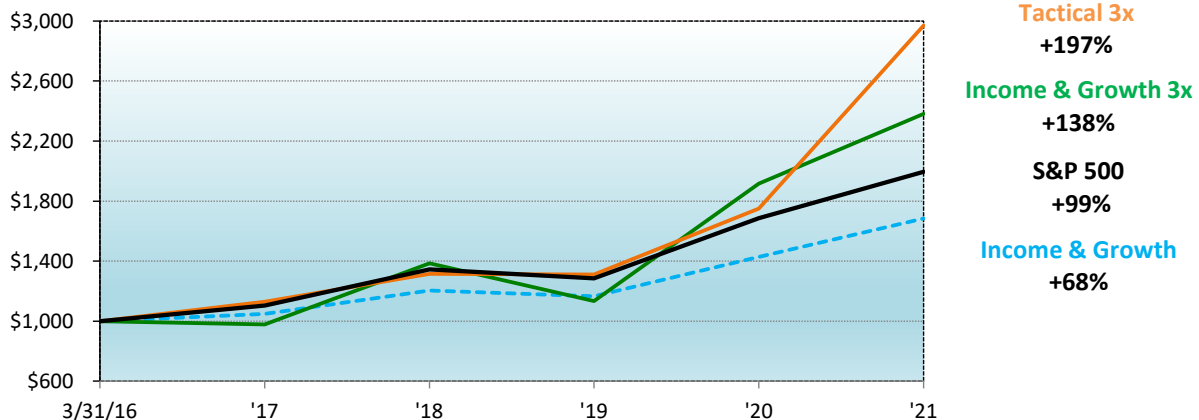
Investment Strategy

Tactical 3x (T3) employs a proprietary rules-based strategy focused on risk parity using leveraged asset class ETFs. The portfolio uses a proven risk control algorithm to **target absolute annual returns above 15%, with a principal risk limit of 8% per year.**

Portfolio Manager

David Kreinces, CIO, is responsible for the portfolio investment decisions. His risk control process has **repeatedly delivered gains in down markets (2008, 2018, early 2020).**

Growth of Initial \$1,000 (4.8 Years Since 4/16)



T3 Monthly Net Performance

Year	Jan	Feb	Mar	Apr	May	Jun	Jul	Aug	Sep	Oct	Nov	Dec	Year
2020	5.7%	9.7%	-2.9%	0.7%	-2.8%	11.0%	11.1%	9.9%	2.7%	-5.0%	8.0%	7.8%	69.7%
2019	9.6%	1.9%	2.0%	1.1%	2.7%	6.5%	-2.7%	5.8%	-3.3%	3.8%	0.7%	1.5%	33.4%
2018	10.6%	1.2%	-2.6%	1.3%	3.2%	-1.6%	-3.1%	3.7%	-2.6%	-7.0%	-1.2%	-1.1%	-0.3%
2017	0.9%	4.5%	0.6%	3.8%	6.1%	-2.8%	0.8%	3.2%	-4.2%	6.1%	0.3%	-3.4%	16.4%
2016	Inception 4/16			-1.3%	0.3%	4.8%	9.3%	-4.4%	-2.0%	-3.4%	5.6%	4.3%	13.0%

Additional Information

Note: All of the performance data is over 4.8 years since April 2016. Worst year is based on worst calendar year since 2000. YTD year-to-date. na Not available. Past performance does not guarantee future results.

ETF Portfolio Management (ETF PM) is a revolutionary financial advisor specialized in investing with exchange-traded funds (ETFs). We customize active and passive investment portfolios, for a wide range of clients, at an ultra-low-cost. Client accounts are held at Interactive Brokers and other custodians may be available upon request.

Please see full performance disclosures on the following page or visit www.etfpm.com.

Performance

	Income & Growth	IG 3x	Tactical 3x	S&P 500
Total Return	68%	138%	197%	99%
Annualized Return	11.6%	20.0%	25.7%	15.6%
Worst Year	-6%	-18%	na	-37%
Annual Returns	IG	IG 3x	T3	SPY
2020	18.0%	24.3%	69.7%	18.3%
2019	22.5%	69.0%	33.4%	31.2%
2018	-3.3%	-18.2%	-0.3%	-4.5%
2017	14.9%	41.7%	16.4%	21.7%
Apr-Dec '16	4.8%	-2.2%	13.0%	10.5%

Portfolio Details

Investment Manager	ETF Portfolio Management, LLC
Account Structure	Separate Accounts, 2% Advisory Fee
Strategy	Risk Parity
Primary Investments	Leveraged Equity Asset Class ETFs
Custodian	Interactive Brokers

General Information: All of our Tactical 3x (T3) performance results relate to the T3 representative account, an account that David Kreinces first traded in April 2016. Mr. Kreinces was solely responsible for the development of T3 and he has full discretionary authority over the selection of investments for, and he is primarily responsible for managing, ETF PM accounts that allocate to the T3 portfolio.

Performance: The performance results for T3 reflect the single account performance achieved by the representative account. Accordingly, the performance results are similar to the composite results but the figures are not identical.

The T3 representative account was chosen because it most closely conforms to the T3 investment strategy. Individual account performance will vary based upon the inception date of the account, restrictions on the account, and other factors, and may not equal the performance presented herein. **Please see etfpm.com for the latest performance report or request the report via email at info@etfpm.com.**

Historical performance is not indicative of future performance. Additionally, the investment return and principal value of an ETF PM account will fluctuate and may be worth more or less than the original cost when liquidated. The investment environment and market conditions may be markedly different in the future and investment returns will fluctuate in value.

The T3 portfolio was implemented, and will continue to be implemented, with a view towards long-term capital growth and protection. The indices presented are for comparison purposes only. An ETF PM Account employing the T3 portfolio may not be as diversified as any of these indices and no index is directly comparable to the T3 portfolio.

Fees: The representative T3 account is charged an annual, all-inclusive fee of 2.0% of assets under management (AUM).

Advisory fees are disclosed in each client's investment management agreement. The T3 portfolios are solely responsible for all commissions and other transaction charges as well as any charges relating to the custody of securities.

Leveraged ETFs: Leveraged ETFs do not deliver their exact multiple of the underlying index. On a regular basis, leveraged ETF returns may deviate materially from the underlying index multiple they target. Investors should not use leveraged ETFs without careful consideration, an appropriate asset allocation, and a disciplined risk control framework.

S&P 500: SPY is an ETF for the S&P 500 Index. The S&P 500 Index is an unmanaged index of common stocks that represents the U.S. stock market. The index is mainly comprised of large cap companies and reflects roughly two-thirds of the total domestic stock market value. SSO is an ETF that targets the S&P 500 2x, and UPRO has a 3x target

Treasury Bonds: TLT is an ETF for 20+ Year Treasury Bonds. UBT targets this asset class 2x, and TMF has a 3x target.